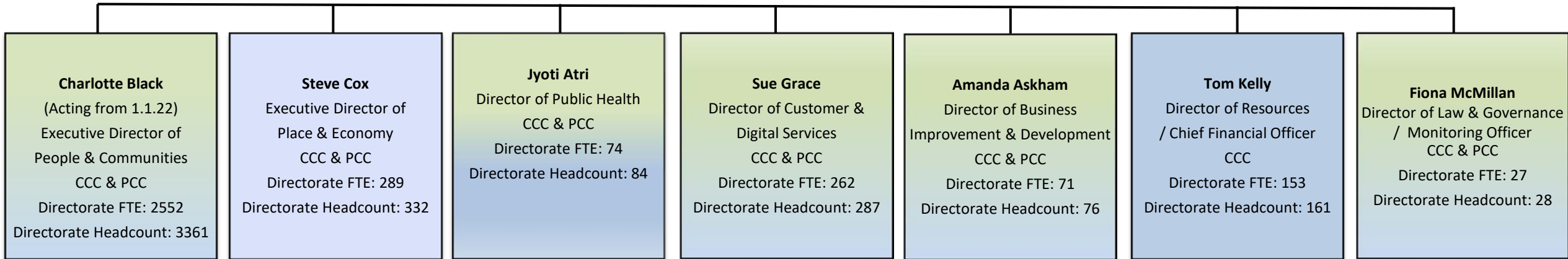


Colour denotes position shared between Peterborough City Council and Cambridgeshire County Council

Colour denotes that position has Cambridgeshire only remit

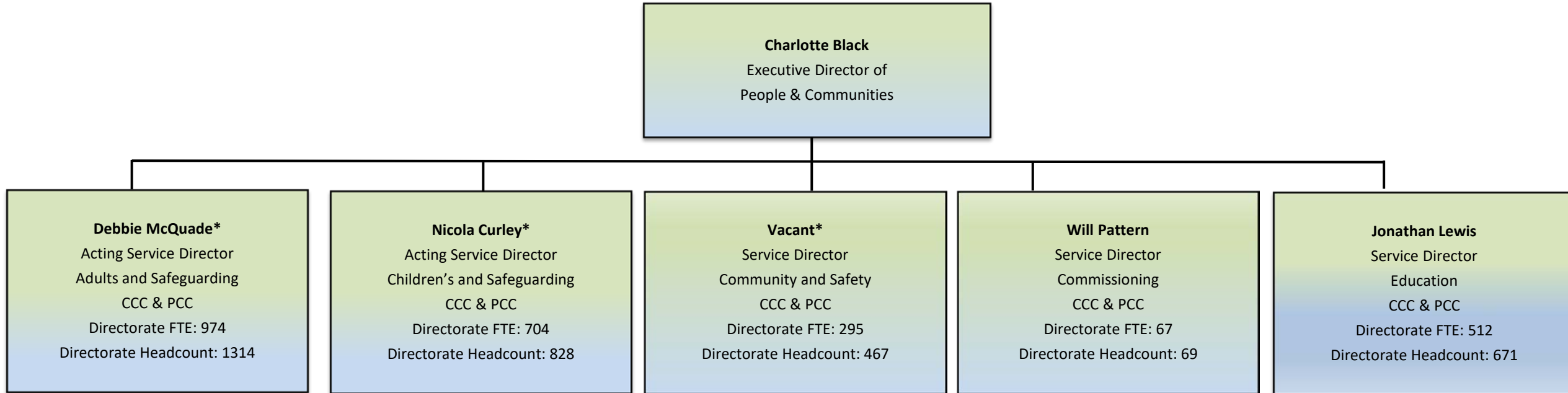
Chief Executive  
**Stephen Moir**  
Council FTE: 3455  
Council Headcount: 4358

**Rachel Stopard**  
Chief Executive, Greater Cambridge Partnership  
Service FTE: 27  
Service Headcount: 29  
(Employment hosted by Cambridgeshire County Council but part funded externally)



# People and Communities

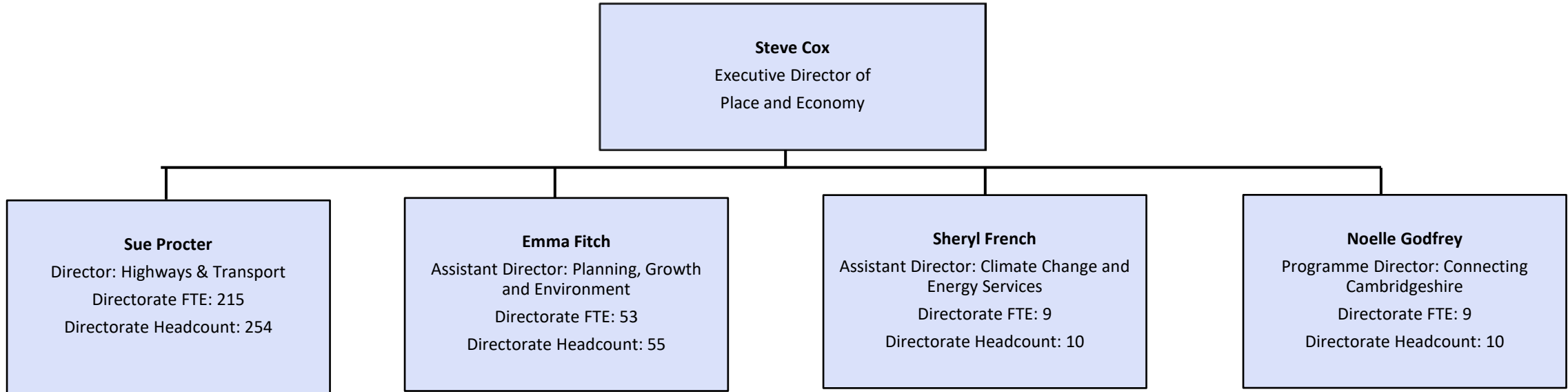
Structure Chart to third tier management. Employee numbers shown by Full Time Equivalent (FTE) and Headcount



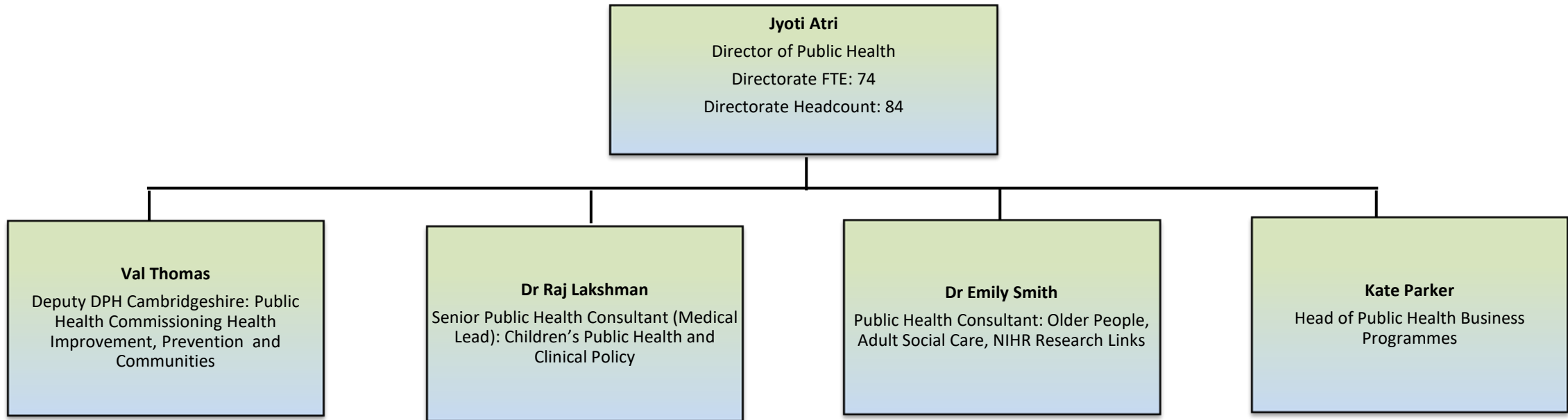
\*Denotes that postholder is employed by Peterborough City Council  
An additional 6 FTE (12 employees) sit in an executive support team within this structure)

# Place and Economy

Structure chart to 3<sup>rd</sup> tier. Showing Employee Numbers by Full Time Equivalent (FTE) and Headcount

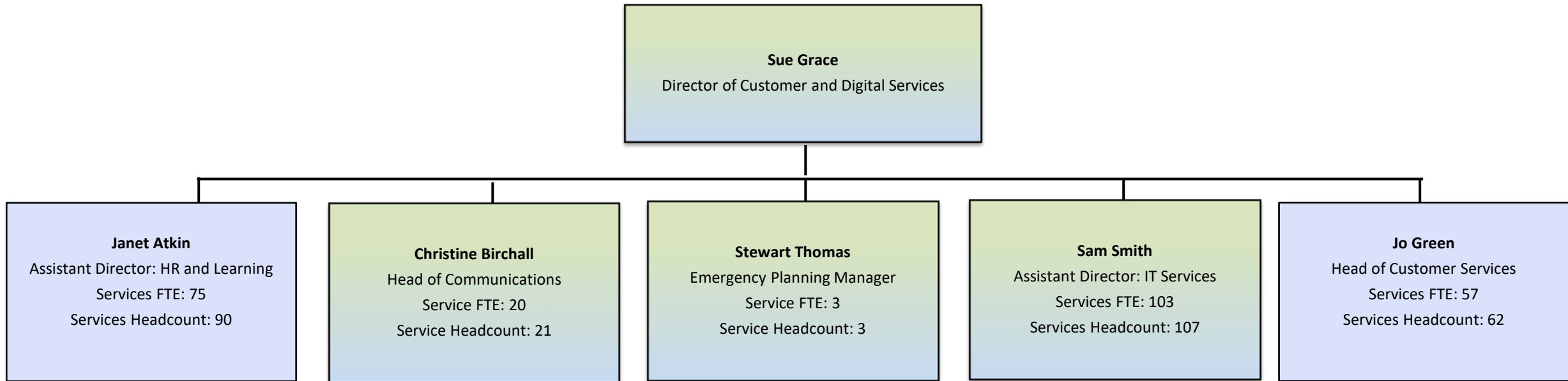


An additional 3 FTE (3 employees) sit in an executive support team within this structure



# Customer and Digital Services

Structure chart to 3<sup>rd</sup> tier. Showing employee numbers by Full Time Equivalent (FTE) and Headcount



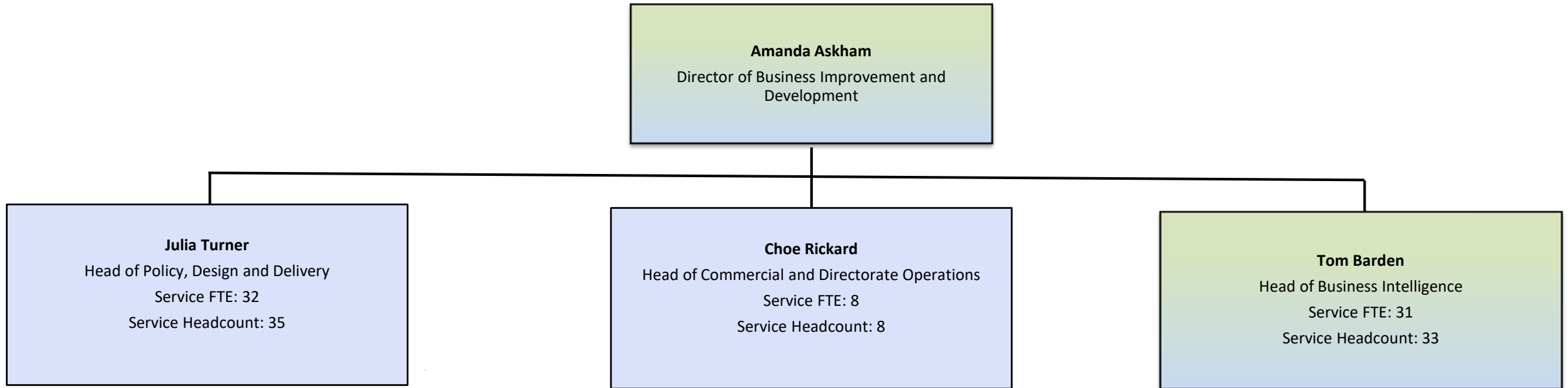
An additional 4 FTE (4 employees) sit in an executive support team within this structure)

# Business Improvement and Development

Showing Structure to Head of Service Level (tier 3) with employee numbers by Full Time Equivalent (FTE) and Headcount



Cambridgeshire  
County Council



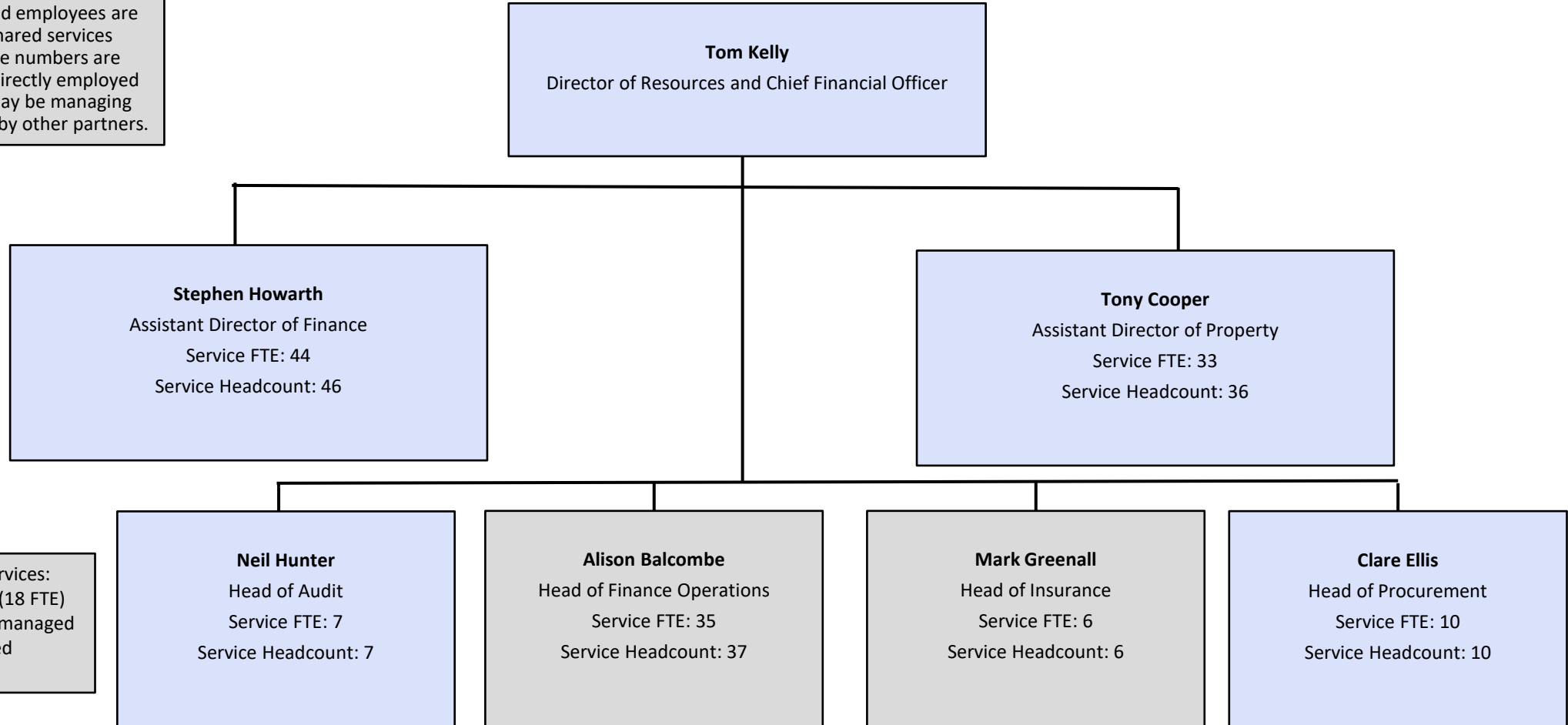
Lives Over Services

Collaborative

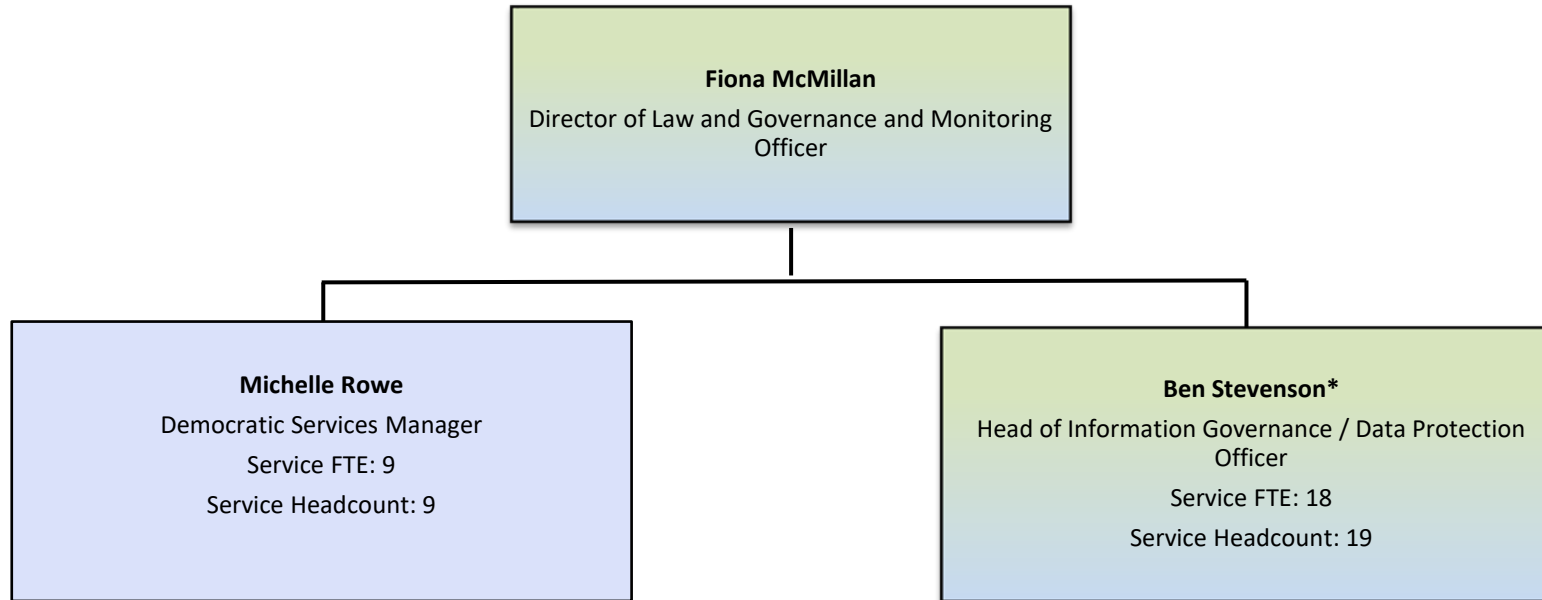
Creative & Aspirational

Accountable

Colour denotes that posts are shared with other local authorities and employees are working as part of a shared services arrangement. Employee numbers are representative of those directly employed by CCC, but managers may be managing additional staff employed by other partners.



Lead Authority Shared Services:  
Additional 19 employees (18 FTE)  
sit in this directorate but managed  
by partners under a shared  
services arrangement



\*Denotes that postholder is employed by Peterborough City Council