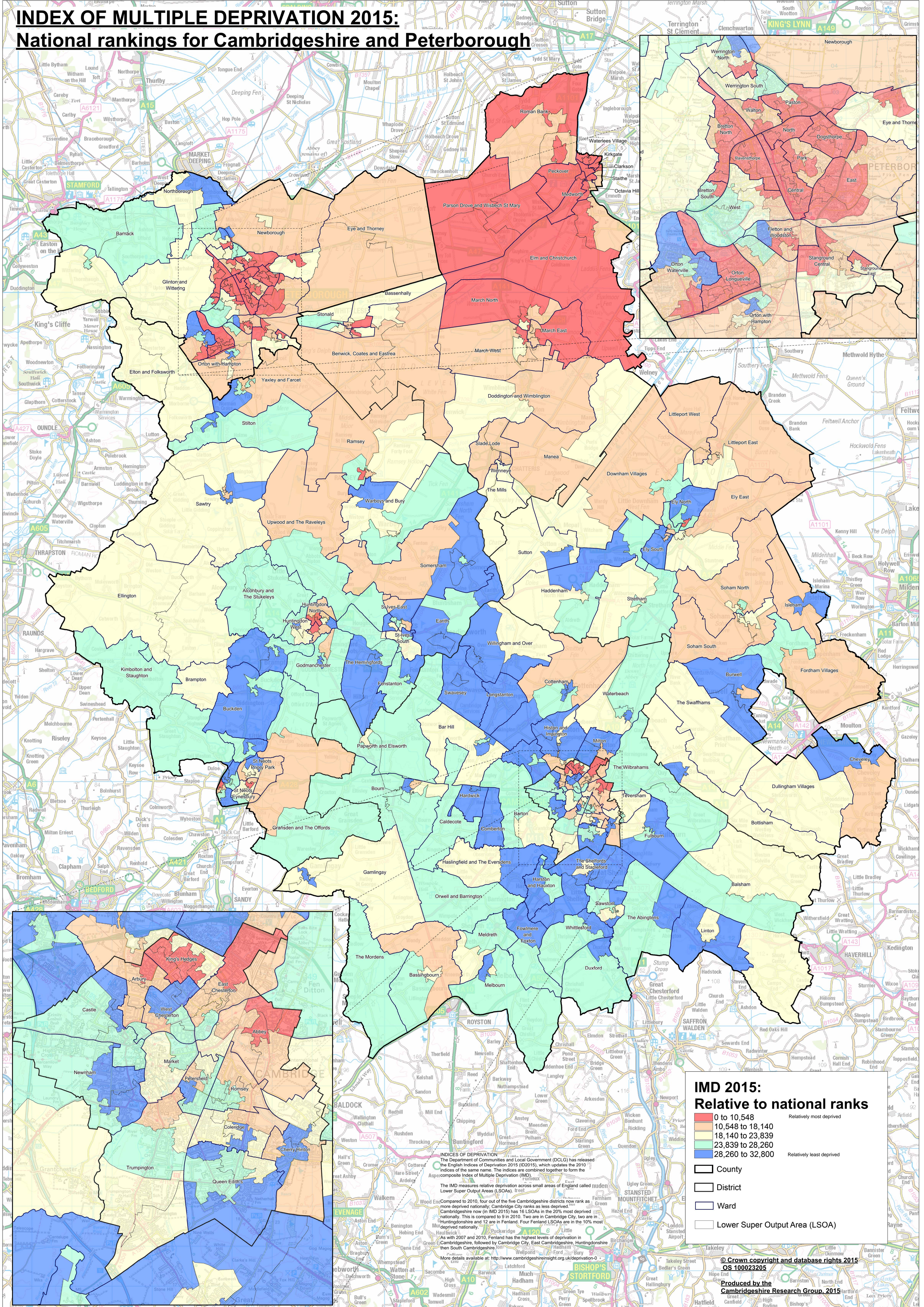


INDEX OF MULTIPLE DEPRIVATION 2015: National rankings for Cambridgeshire and Peterborough



**IMD 2015:
Relative to national ranks**

0 to 10,548	Relatively most deprived
10,548 to 18,140	
18,140 to 23,839	
23,839 to 28,260	
28,260 to 32,800	Relatively least deprived

County
 District
 Ward
 Lower Super Output Area (LSOA)

INDICES OF DEPRIVATION
 The Department of Communities and Local Government (DCLG) has released the English Indices of Deprivation 2015 (ID2015), which updates the 2010 indices of the same name. The indices are combined together to form the Aspects composite Index of Multiple Deprivation (IMD).
 The IMD measures relative deprivation across small areas of England called Lower Super Output Areas (LSOAs).
 Compared to 2010, four out of the five Cambridgeshire districts now rank as more deprived nationally. Cambridge City ranks as less deprived. Cambridgeshire now (in IMD 2015) has 16 LSOAs in the 20% most deprived nationally. This is compared to 9 in 2010. Two are in Cambridge City, two are in Huntingdonshire and 12 are in Fenland. Four Fenland LSOAs are in the 10% most deprived nationally.
 As with 2007 and 2010, Fenland has the highest levels of deprivation in Cambridgeshire, followed by Cambridge City, East Cambridgeshire, Huntingdonshire then South Cambridgeshire.
 More details available at: <http://www.cambridgeshireinsight.org.uk/deprivation-0>